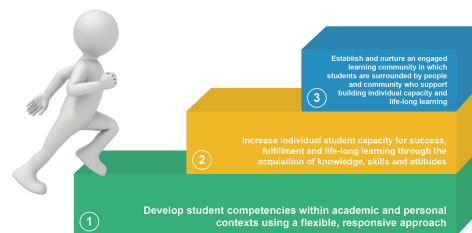
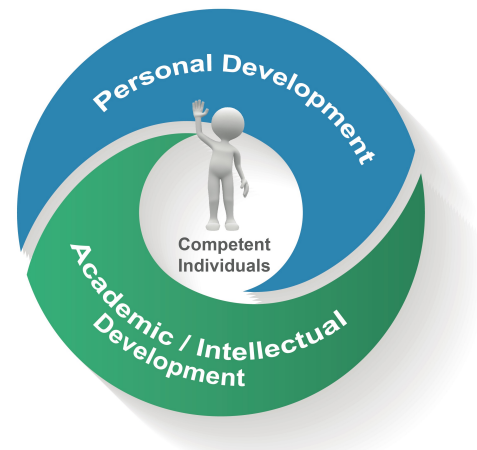


CAPE believes that:

1. Each student, as an individual, presents with particular academic and personal needs because of a variety of factors.
2. Students, when placed in a student-centred environment, have the greatest potential of becoming successful students and life-long learners.
3. Students are best served through a personalized, integrated program which is flexible, innovative, and responsive.
4. The school, as a collaborative instructional team, creates a shared learning atmosphere for all members to develop and maintain a student-centred learning environment. Students are grouped and/or streamed to create highly effective learning environments.
5. Parents, as partners in the learning community, provide valuable perspectives and support for their children and deserve to have a choice in an educational program which best supports individualized learning.
6. The community is a partner in the learning as it provides the domain for opportunities and experiences which expand beyond the school, including leadership, collaboration, diversity, and resourcefulness.

The purpose of CAPE's personalized, integrated program is to support the learner's acquisition of cross-curricular competencies, critical thinking and problem-solving skills, and other academic skills while also developing personal skills such as relationships-building, self-advocacy, creation of opportunities, risk-taking, and achieving goals.

CAPE's kindergarten program is a voluntary, pre-school, full-day, every-day, educational program offered to eligible children. The kindergarten program emphasizes a developmental process that encourages every child to grow intellectually, physically, socially, and emotionally at rate that respects the potential of each individual child. It therefore aligns with CAPE's grade 1-9 integrated, personalized program.



Goals For Success

CAPE defines excellence as:

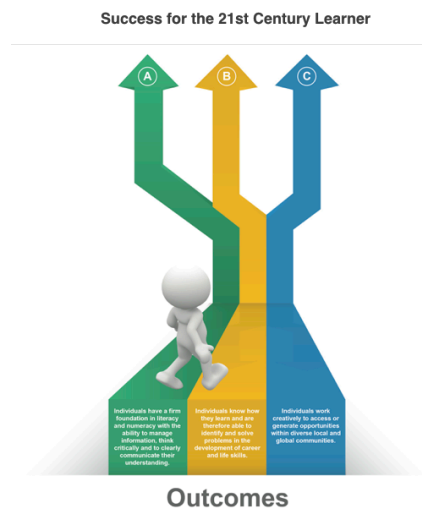
(a) the achievement of the student's personal best in academic pursuits;

(b) the development of social and interpersonal skills (such as anger management, problem solving, democratic decision making, tolerance, and/or acceptance of different beliefs), self-esteem, self-motivation, and self-direction (independent learning), and the development of 'citizenry' skills.

Charter Goals		Outcomes	
Charter Goal 1	CAPE School is focused on achieving academic excellence.	Outcome 1	Student learning is improved with personalized information from regular and timely assessments so that students are working at their own personal best.
		Outcome 2	Student progress shows above average growth.
		Outcome 3	Students become well-rounded individuals with a broad knowledge base which they can apply in flexible contexts.
		Outcome 4	Students have a greater awareness of the world around them through exposure to other cultures, ideas, and beliefs and integrate ideas from various disciplines.
Charter Goal 2	CAPE School is focused on achieving personal excellence.	Outcome 1	Students have acquired personal and interpersonal skills so that they may become productive citizens of the world and life-long learners.
		Outcome 2	Students learn the importance of caring for others, learn respect for others, and treat others fairly in both smaller and larger contexts.

Uniqueness

- CAPE provides a personalized, integrated, flexible, school-wide program that seamlessly blends and supports the whole child.
- Each aspect of the school program is based on investigations of research-based practices to best suit our ever-changing population of diverse learners.
- Students are supported through an effective and extremely timely response to assessed student needs through a collaborative, multidisciplinary team.
- Partnerships with parents facilitate the parents' understanding of their children's needs, ways through which the children can be supported personally, and how the school and parents can work together to create a flexible, responsive environment to maximize learning.
- Partnerships with community provide access to external services and environments that support both personalized learning and groups of learners.



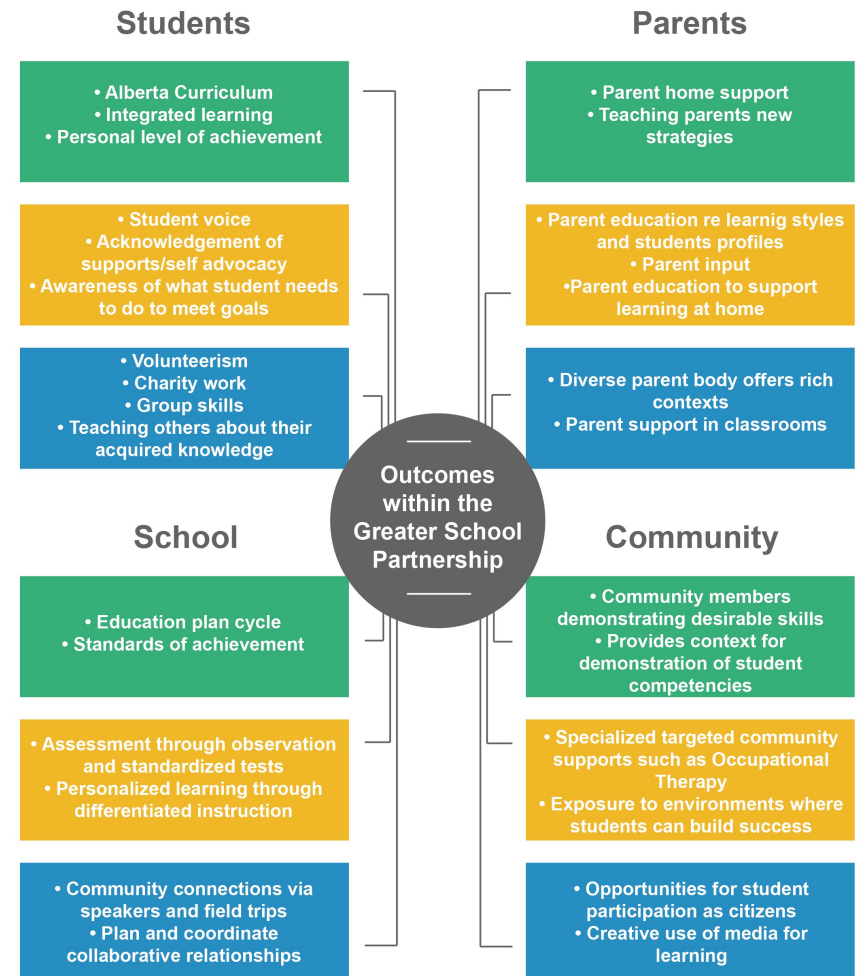
Learning Environment

CAPE provides a safe, caring, and supportive learning environment for each learner. The learning environment is purposely designed to support student engagement, the pursuit of personal best, capacity, and citizenship.

Parents choose CAPE with the expectation that its environment is understanding, knowledgeable, and responsive to the needs of their children. Parents learn about their children as they develop and the school supports the acquisition of knowledge so that parents may support their children effectively.

The Board, the administration, and the staff are understanding, accepting, and responsive to the distinct characteristics and needs of each child/student. CAPE's small class size and low adult/learner ratio, flexible learning groupings, integrated learning, and differentiated and personalized opportunities provide learners with essential personal, physical, intellectual, emotional, and social experiences as they pursue academic and personal excellence.

CAPE's learning environment reaches into the community to create partnerships which are not only conducive to student engagement but also foster a sense of belonging and of community. These relationships foster and promote life-long learning, global ethical citizenry, and the entrepreneurial spirit. Collaboration within the community allows for learners-mentors and/or role model interactions and for opportunities to participate in experiences that support successful engagement.



Competencies : Literacy / Numeracy

Capacity (how students learn)

Work Creatively / Generate Opportunities Within Context

Population

CAPE Public Charter School provides a safe, caring, and supportive environment for any student who believes, or whose parents believe, that CAPE's program is best suited to the needs of that student. It supports a population comprised of diverse complex learners that includes students with Mild/Moderate, Program Unit Funding, Severe, Gifted and Gifted/Disabled codes, as well as students requiring little to no additional supports.

